

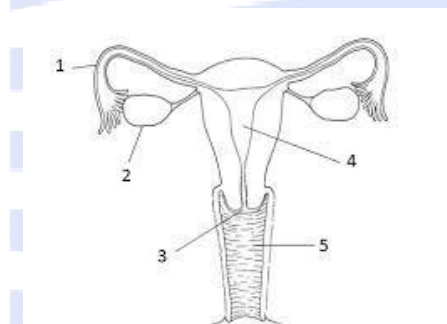
**Marks: 35**

**Time: 1 hr**

1. Define the following
  - a. Reproduction
  - b. Menarche
  - c. Gestation
  - d. Ovulation

2
2. What are the limitations of asexual reproduction? 2
3. Where do the following happen-
  - a. Implantation of embryo in humans
  - b. Fertilisation in humans
  - c. Nutrition is derived by plant embryo from this.
  - d. Testis lie in this.

2
4. Draw a diagram to show sporulation as a means of sexual reproduction. What is the advantage of spore formation? 3
5. Draw a labelled diagram for male reproductive system. Which part of the duct system is ligated in vasectomy? 3
6. Study the given diagram and identify, 1,2,3,4,5. What is the function of 2? 3



7. How are surgical methods of contraception different from mechanical methods? 2
8. What is Placenta? What is its role? 2
9. Draw the female reproductive part of a flower. What are the post fertilization changes that take place in a flower? 3
10. Give 2 examples of
  - a. STD
  - b. IUD
  - c. Unisexual flower
  - d. Organisms that reproduce by regeneration

4
11. Give reasons-
  - a. regeneration not considered reproduction
  - b. tissue culture is used to grow ornamental plants
  - c. fertilization in angiosperms is called double fertilization
  - d. amoeba is immortal

4
12. What is vegetative propagation? What are its advantages and disadvantages? 3
13. Draw a diagram for a dicot seed. Which part of the seed forms the root? 2